

Promat PROMASEAL® Expansion Joint Strip

Introduction

Promat PROMASEAL® Expansion Joint Strips are highly compressible, flexible, fire resistant seals which are used where movement joints are formed in the structure of a building.

PROMASEAL® Expansion Joint Strips consist of layers of intumescent material bonded to Class 0 foam and have been successfully fire tested and assessed to provide up to 120 minutes in joints in walls and floors.

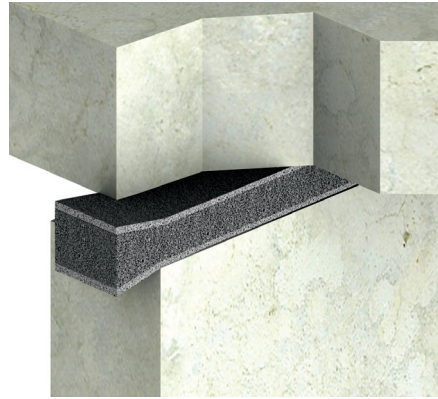
Applications

PROMASEAL® Expansion Joint Strips are ideal for sealing movement joints at junctions between compartment walls and floors and within walls and floors. Their flexibility makes them suitable for use in a variety of configurations.

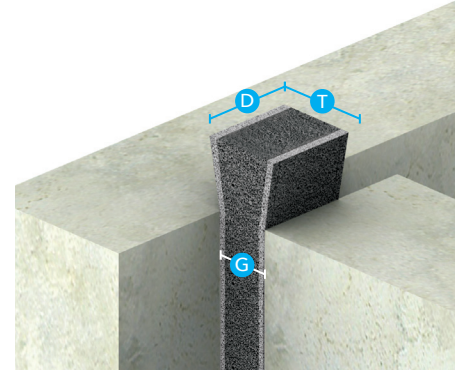
Installation

The strip dimension is determined by the minimum and maximum positions of the joint width expected during the life of the building. The strip width **T** should not be less than the maximum expected joint width **G**. The strip depth **D** is a function of the joint width and the fire resistance period.

The appropriate size of PROMASEAL® Expansion Joint Strip is simply compressed between fingers and thumb until it can be inserted into the required gap. For up to 120 minutes fire resistance only one strip is required. The strip must be centrally located in the wall or floor joint. In cold conditions it is advisable to store in a warm atmosphere immediately prior to installation as this improves compressibility. The strip may readily be cut to suit a particular length.



Sealing movement joints at junctions for walls and floors



Sealing movement joints at junction for walls

When more than one length of PROMASEAL® Expansion Joint Strip is required in a joint, ensure the two pieces are butted tight together and there is no gap between the adjoining ends.

At the ends of each joint, ensure the strip is fitted tight to the adjoining surface. For situations not covered by the table below, please consult the Promat Technical Services team.

PROMASEAL® Expansion Joint Strip sizes for blockwork/masonry/concrete (aerated or normal) wall and floor installations (minimum 150mm thick) - Tested in accordance with the criteria of BS476: Part 20: 1987.

Strip size	Maximum joint width in mm G	Minimum seal width in mm T	Minimum seal depth in mm D	Number of Intumescent Strips	Number/width of foam strips (mm)	Integrity (mins)
4009053	10	12	12	1	1x10	120
4009055	20	29	12	2	1x25	120
4009039	25	32	20	2	1x30	120
4009040	35	53	20	3	2x25	120
4009041	50	61	35	3	1x25 + 1x30	120
4009042	75	90	50	4	1x25 + 2x30	120
4009043	100	126	100	5	4x30	120
4009044	120	147	125	6	2x25 + 3x30	120
4009045	150	170	100	7	4x25 + 2x30	120

Application Technique: Compressed into gap/joint such that the multi-layers/banding are visible.

Note: The block/masonry/concrete walls and floors shall be at least 150mm thick and have at least the same fire rating as that required for the penetration seal. Block/masonry and concrete gap faces will be within the density range of 450 to 2300kg/m³ and gap faces will be free from loose or flaking material.